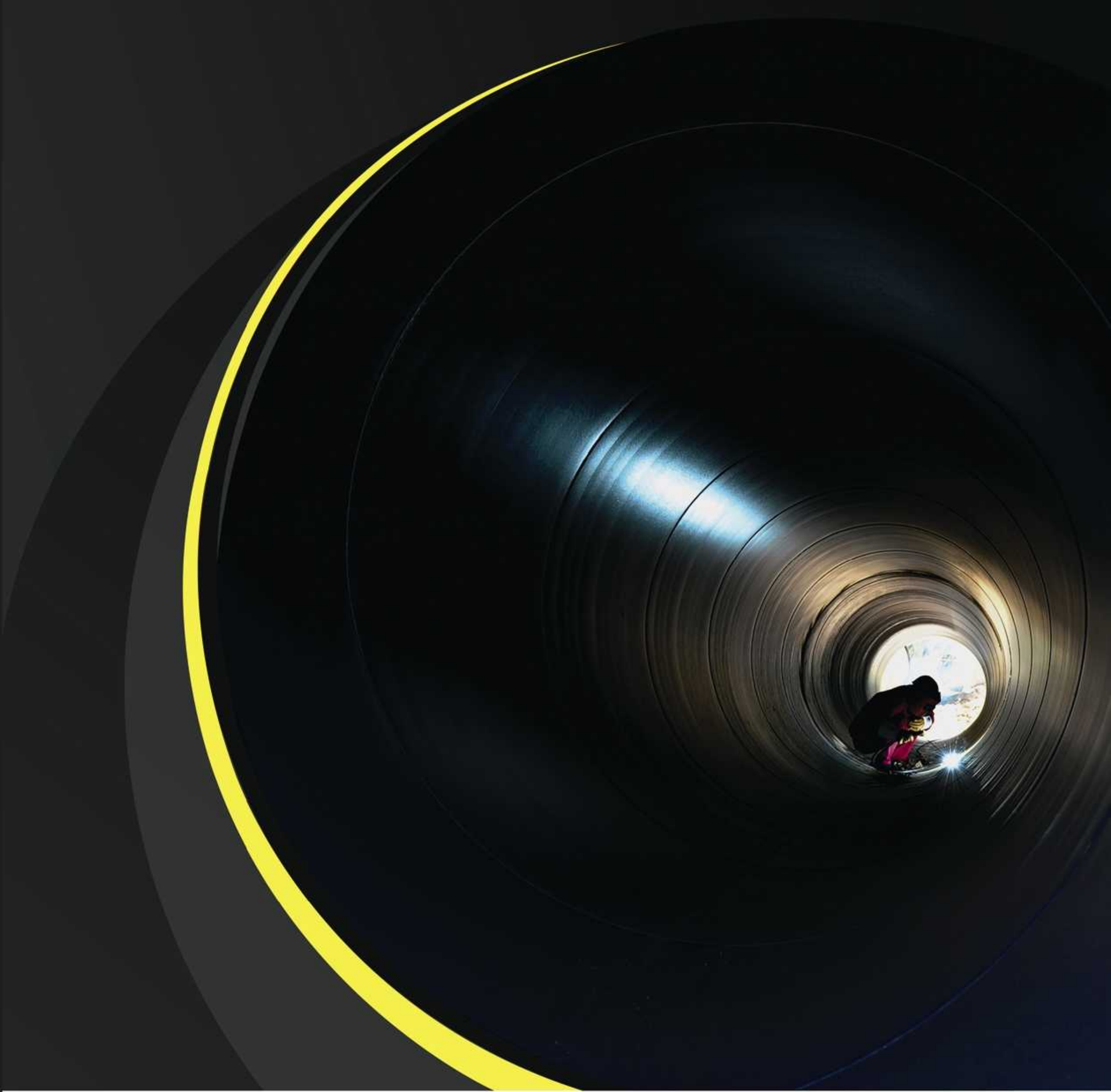




米萨焊接(无锡)有限公司
MISA WELDING (WUXI) CO.,LTD



米萨焊接(无锡)有限公司
MISA WELDING (WUXI) CO.,LTD

地址:江苏省无锡市滨湖区胡埭镇刘閻路76号
Add: No.76 Liulv Rd,Hudai Town, Binhu Dist, Wuxi, P.R China 214161

电话: 86-510-87053880

传真: 86-510-87057518

邮箱(Email): info@misawelding.com

网址(Web): www.misawelding.com

公司简介:

MISA焊接是一家集研发,制造,销售为一体的高科技企业,主要从事自动焊接设备和夹具的生产,数控切割机,H型钢生产线等。如焊接滚轮架,焊接变位机和焊接操作机等。我们的工厂位于中国无锡。距离上海浦东国际机场和上海港的两个生产基地约180KM。

我们遵循“质量第一,客户至上,效率第一,服务至上”的一贯理念,成功运营了15年以上。我们与国内外众多知名企业合作,拥有一流的管理,一流的售后服务团队。为了国际化,所有的硬件都已经标准化。MISA依靠国际市场,把我们的产品发往了世界各地。

客户为我们提供了为客户提供服务的机会,我们提供了满意的产品。我们希望您和我们能够超越,共创美好未来。

依靠质量和产能,我们的设备在国内和国际市场上都很受欢迎。我们拥有经验丰富的团队,专注于技术和研究,这是我们成长的基础,变得更强大和更强大。

我们在这个领域继续前进,仍然以客户为导向,提供良好的服务。说实话,开拓进取,求真务实是我们的信条。客户的满意是我们的成功。

INTRODUCTION

MISA WELDING IS A COMPANY THAT COMBINE RESEARCH AND DEVELOPMENT ,MANUFACTURING ,SALES FOR THE INTEGRATION OF HIGH-TECH ENTERPRISES,MAINLY ENGAGED IN THE PRODUCTION OF AUTOMATIC WELDING EQUIPMENT AND FIXTURES ,CNC CUTTING MACHINE ,H-BEAM PRODUCTION LINE ,ETC. SUCH AS WELDING ROTATOR , WELDING POSITIONER AND WELDING MANIPULATOR .OUR FACTORY IN LOCATED IN WUXI,CHINA.TWO PRODUCTION BASES FROM SHANGHAI PUDONG INTERNATIONAL AIRPORT AND SHANGHAI PORT IS ABOUT 180KM.

WE FOLLOW "THE QUALITY FIRST,CUSTOMER SUPREME ,AND THE EFFICIENCY FIRST ,SERVICE IS SUPREME"THE CONSISTENT IDEA,HAS SUCCESSFULLY PASSED MORE THAN 15 YEARS. WE HAD COOPERATED WITH MANY FAMOUS ENTERPRISES BOTH IN CHINA AND ABROAD,AND HAVE FIRST-CLASS MANAGEMENT,FIRST-CLASS AFTER SERVICE TEAM.IN ORDER TO INTERNATIONALIZATION,ALL THE HARDWARE HAS BEEN STANDARDIZED .MISA IS ALREADY RELYING ON THE DOMESTIC MARKET ,ARE THE FIRST TO PREEMPTIVE OVERSEAS MARKET SHARE ONE OF PEER ENTERPRISES AND NOW SELL HAS COVERED ALL DOMESTIC PROVINCES ,AS WELL AS SOUTHEAST ASIA ,NORTH AND SOUTH AMERICA ,MIDDLE EAST,NORTH AFRICA AND OTHER PLACES.

THE CUSTOMERS PROVIDED US THE OPPORTUNITY OF THE SERVICE FOR THE CLIENTS,WE HAVE SUPPLIED THE SATISFIED PRODUCT.WE HOPE YOU AND WE COULD TRANSCEND TOGETHER,AND CREATE A BETTER FUTURE.

RELY ON THE QUALITY AND CAPACITY, OUR EQUIPMENT ARE WELL ACCEPTED IN DOMESTIC AND THE WORLD MARKET. WE HAVE EXPERIENCED TEAM WHICH CONCENTRATE ON TECHNOLOGY AND RESEARCH, WHICH ARE THE BASE FOR OUR GROWTH AND BECOME STRONGER AND POWER.

WE KEEP MOVING FORWARDS IN THIS FIELD, STILL KEEP AT CUSTOMER ORIENTATION, SUPPLY GOOD SERVICE. TO BE HONEST, EXPLOITATION AND ENTERPRISING, SEEKING TRUTH AND INNOVATION ARE OUR CREDO. CUSTOMER'S SATISFACTION IS OUR GREAT SUCCESS.



行业应用 Application



海洋工程 Oceanic Engineering



Wind Tower



压力容器 Pressure Vessel



管道 Pipeline



钢结构 Steel Structural Construction

可调式滚轮架 Conventional Welding Rotator



概述:

滚轮架系列分为自调试, 可调式, 组对滚轮架, 行走式滚轮架, 倾斜滚轮架, 防窜滚轮架等等。用于圆柱形筒体的焊接, 抛光, 衬胶及装配。自调试滚轮架可根据筒体大小自行调节, 可调式滚轮架采用丝杆调节, 螺钉分档调节。速度采用交流变频器控制, 线速度为数字显示, 先进可靠。MISA还可以为用户定制滚轮架。

Welding rotator is a kind of our advanced welding equipment, which is be researched and manufactured absorbing domestic and international advanced equipment. It is mainly used for pipe, containers, boilers, Pressure vessels, oil tank and other cylinder' s assembling, burnishing and welding, can use together with column and boom and SAW system to realize inside and outside girth and longitudinal welding. Its series includes self aligning rotators (HGZ), and conventional rotators (HGK). Other customize have trolley tilting anti drift rotator; Accordingly this device has advantages of compact structure, small cubage, beautiful shape, lightweight, convenient operating and so on. The machine can assort all kinds of auto welding or manual welding, improving welding quality, lessening welding labor and improve productivity.

We can provide solutions to unique welding rotator according to the customer' s requirement.

技术参数:

规格型号 (Type)	HGK-2	HGK-5	HGK-10	HGK-20	HGK-40	HGK-50	HGK-60	HGK-100	HGK-200	HGK-300	HGK-500
载重 (Load)t	2	5	10	20	40	50	60	100	200	300	500
滚轮直径 (Wheel diameter) mm	250	250	300	350	400	400	450	500	700	800	900
滚轮宽度 (Wheel width) mm	100	140	170	180	200	200	220	280	300(钢轮)	300(钢轮)	300(钢轮)
筒体直径 Wessel diameter	最小 (Min)mm	150	250	300	500	500	500	800	800	1000	1000
	最大 (Max)mm	2000	2800	3200	4500	4800	5000	5000	5000	6000	8000
滚轮速度 (Wheel velocity)m/h	6-60	6-60	6-60	6-60	6-60	6-60	6-60	6-60	6-60	6-60	6-60
电机功率 (Power of motor)KW	2×0.18	2×0.37	2×0.55	2×1.1	2×1.5	2×2.2	2×2.2	2×3	2×4	2×5.5	2×7.5

可调式滚轮架 Conventional Welding Rotator



标准可调式滚轮架 (5Ton-1200Ton)
Standard Conventional Welding Rotator (Camden,NJ)



60Ton 电动行走滚轮架
60Ton Motorized Moving Welding Rotator (Midland-TX)



100Ton 双片聚氨酯可调滚轮架
100Ton Dual Polyurethane Wheel Welding Rotator (Singapore)



30Ton 聚氨酯轮特制可调滚轮架
30Ton PU Wheel Welding Rotator (Brisbane, Australia)



200Ton 钢轮可调滚轮架
200Ton Metal Wheel Welding Rotator (Buttrio, Italy)



150Ton 聚氨酯轮可调滚轮架
150Ton PU Wheel Welding Rotator (Ho Chi Minh City, Vietnam)

自调式滚轮架 Self-aligning Welding Rotator



概述:

滚轮架系列分为自调式, 可调式, 组对滚轮架, 行走式滚轮架, 倾斜滚轮架, 防窜滚轮架等等。用于圆柱形筒体的焊接, 抛光, 衬胶及装配。自调式滚轮架可根据筒体大小自行调节, 可调式滚轮架采用丝杆调节, 螺钉分档调节。速度采用交流变频器控制, 线速度为数字显示, 先进可靠。MISA还可以为用户定制滚轮架。

Welding rotator is a kind of our advanced welding equipment, which is be researched and manufactured absorbing domestic and international advanced equipment. It is mainly used for pipe, containers, boilers, Pressure vessels, oil tank and other cylinder' s assembling, burnishing and welding, can use together with column and boom and SAW system to realize inside and outside girth and longitudinal welding. Its series includes self aligning rotators (HGZ), and conventional rotators (HGK). Other customize have trolley tilting anti drift rotator; Accordingly this device has advantages of compact structure, small cubage, beautiful shape, lightweight, convenient operating and so on. The machine can assort all kinds of auto welding or manual welding, improving welding quality, lessening welding labor and improve productivity.

We can provide solutions to unique welding rotator according to the customer' s requirement.

技术参数:

规格型号 (Model)			HGZ-5	HGZ-10	HGZ-20	HGZ-30	HGZ-40	HGZ-50	HGZ-60	HGZ-80	HGZ-100	
载重 (Load)t			5	10	20	30	40	50	60	80	100	
滚轮组 Wheels	两只 Two	金属轮 Metal rollers	直径mm Diameter	240	290	340	340	390	390	440	490	490
			宽度mm Width	20	25	30	30	40	40	50	60	80
	一只 One	橡胶轮 Rubbers rollers	直径mm Diameter	250	300	350	350	400	400	450	500	500
			宽度mm Width	100	120	120	120	120	120	120	120	120
筒体 直径 Tube body diameter	最小 (Min)mm		250	320	500	530	600	700	750	850	1000	
	最大 (Max)mm		2300	2800	3500	3700	4200	4500	4800	5000	5500	
滚轮速度 (Wheel velocity)m/h			6-60	6-60	6-60	6-60	6-60	6-60	6-60	6-60	6-60	
电机功率 (Power of motor)Kw			0.75	1.1	1.5	2.2	3	4	4	4	5.5	

自调式滚轮架 Self-aligning Welding Rotator



60T 电动行走滚轮架配组对
60Ton Motorized Moving Welding Rotator with Fit-Up (Midland,TX)



40Ton 双驱标准自调滚轮架
40Ton Double Drive Standard Welding Rotator (Monterrey,Mexico)



150Ton 双驱聚氨酯自调滚轮架
150Ton Polyurethane Wheel Welding Rotator (Rayong,Thailand)



80Ton CE 认证聚氨酯自调滚轮架
80Ton CE Certificate PU Welding Rotator (Rotterdam,Netherlands)



80Ton 自调滚轮架
80Ton PU Wheel Welding Rotator (Mersin, Turkey)



10Ton 手动行走自调滚轮架
10Ton Manual Moving Welding Rotator (Panama City, Panama)

管道装配生产线 Fit-Up Pipe Growing Line

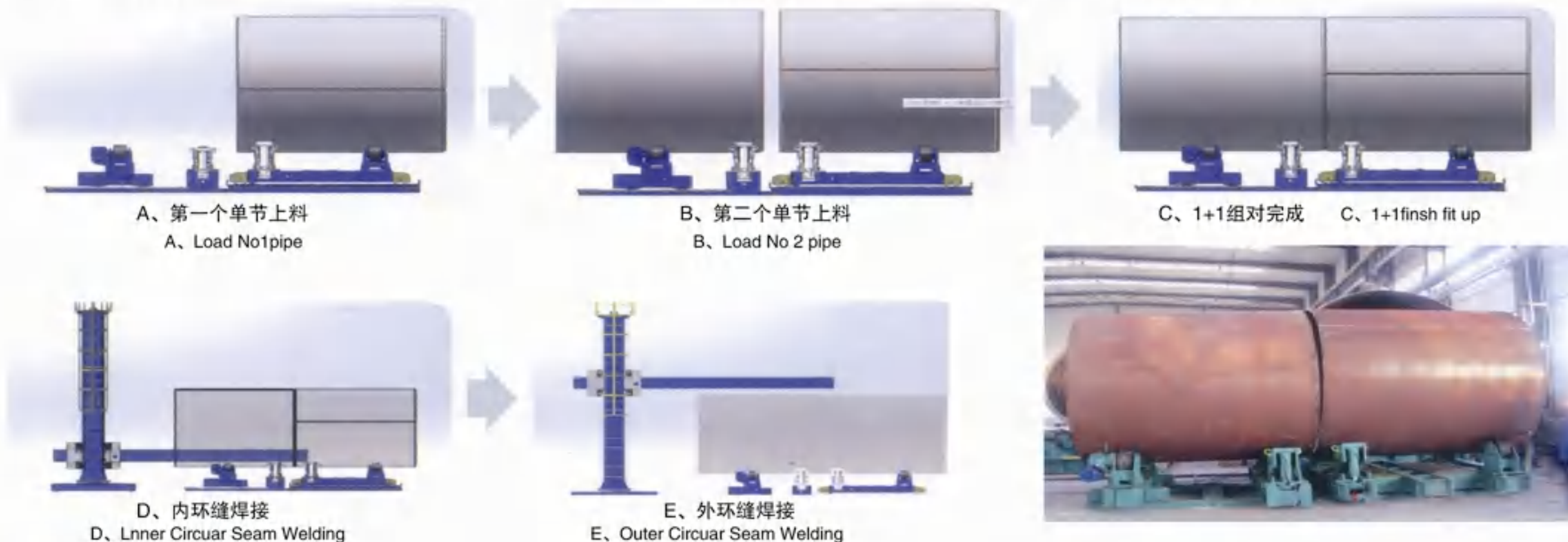


概述:

管道装配生产线用于拼装,焊接管道,把每一节管道拼装成理想的长度。详细的参数,需要与我们确认。
Fit-up pipe growing is use for assemble and welding the pipe , assemble each pipe to a longer pipe. for more details , please confirm with us.

风力发电设备作为目前新能源开发的一个重要发展方向,其主要设备组成部分——风力塔架的制作,在国内正逐步兴起。本生产线主要分为板材数控切割下料、单节筒体卷制成形、单节筒体直缝焊接、法兰与筒体短节组焊、筒体逐节组对内外环缝焊接、喷砂除锈、防腐喷漆烘干等工序。整条生产线全自动化操作,提高了工作效率。

Wind power electric power generation equipment is a important development direction of at present new exploitation of energy resources,whose main equipment is composed of a part——wind power gantry fabrication,be on the rise step by step in in the homeland.The production line is mainly mark sheet material expects that under numerical control cutting、the alone festival tube body book makes forming、the flange and the short tube body festival group solder、the section-by-section tube body group sews welding to inside and outside ring、sand blast rust cleaning、antiseptis lacquers stoving waits for working procedure.Entire production line complete automation is handled,have improved availability.



20T电动行走组对中心
20Ton Fit-up Pipe Growing Line (Camden, NJ)



20Ton 手动行走组对中心
20Ton Manual Moving Fit-up Growing Line (Montreal,Canada)



60Ton 自调滚轮架配平移式组对滚轮架
60Ton Self-aligning rotator with Translational type fit-up (Midland, TX)



40Ton 标准组对中心 (10Ton-500Ton)
40Ton Standard Fit-up Growing Line (Brisbane, Australia)



100Ton 特制组对中心
100Ton Customized Fit-up Welding Station (Vung tau, Vietnam)



20Ton 手动行走自调滚轮架
20Ton 2+2 Pipe Welding Station (Istanbul, Turkey)

客户应用反馈 Customer Application Feedback



美国-德克萨斯
TX, USA



美国-新泽西
NJ, USA



阿联酋-迪拜
Dubai, UAE



克罗地亚-里耶卡
Rijeka, Croatia



荷兰-鹿特丹
Rotterdam, Netherlands



澳大利亚-布里斯班
Brisbane, Australia



意大利-巴特里奥
Buttrio, Italy



越南-河内
Hanoi, Vietnam



泰国-罗勇
Rayong, Thailand



土耳其-梅尔辛
Mersin, Turkey

焊接变位机 Welding Positioner



概述:

焊接变位机主要是通过工作台的升降、回转、翻转等运动使工件处于最佳焊接位置，有侧翻式、头尾式、升降式及双回转等多种结构形式。可与焊接操作架等配套组成自动焊接专机，还可与机器人等配套实现自动化焊接。同时可根据用户的工件和工艺要求，设计定制各种特制焊接变位机。

Welding positioner is mainly used to placed the work piece in the best position for welding and assembling with the work bench elevating, turning,tilting,its series includes tilting,head and tail stocks, elevating,and double turning positioner.The positioner can be supplied for interfacing with robot or welding manipulators,to realize the welding automation.At the same time,we can design and customize various type of special positioners according to the technological requirements and varieties of different products given by the customer.

技术参数:

规格型号 Model	HBJ-01	HBJ-03	HBJ-06	HBJ-12	HBJ-30	HBJ-50	HBJ-100	HBJ-150	HBJ-200	HBJ-300	HBJ-500
额定承载 Rated weight bearing (kg)	100	300	600	1200	3000	5000	10000	15000	20000	30000	50000
回转速度Overturning (rpm)	0.4-4	0.1-1	0.09-0.9	0.05-0.5	0.05-0.5	0.05-0.5	0.05-0.2	0.05-0.5	0.05-0.5	0.04-0.4	0.04-0.4
翻转速度Speed of table (rpm)	手动	手动	1.1	0.67	0.23	0.14	0.14	0.14	0.14	0.10	0.10
翻转角度Turong angle (°)	0~120	0~90	0~90	0~120	0~120	0~120	0~120	0~120	0~120	0~120	0~120
工作台尺寸Size of table (mm)	φ 400	φ 600	φ 1000	φ 1200	φ 1400	φ 1500	φ 2000	φ 2200	φ 2500	φ 3000	φ 4000
电机功率回转Turning Power(KW)	0.06	0.37	0.75	1.1	1.5	3	3	3	4	7.5	11
翻转Overturning	/	/	0.75	1.5	2.2	3	4	5.5	7.5	11	18.5
额定载荷时最大偏心距 Max eccentric Distance (mm)	150	150	150	200	200	300	400	200	200	200	200
额定载荷时最大重心距 Max gravity distance (mm)	100	100	100	150	200	300	400	500	630	630	800
垂直平面回转直径 Max turning distance (mm)	φ 600	φ 800	φ 1500	φ 2050	φ 2100	φ 2500	φ 3240	φ 3400	φ 3400	φ 4200	φ 5700

焊接变位机 Welding Positioner



1.2T-3T 标准焊接变位机
1.2T-3T Standard Welding Positioner (Brisbane, Australia)



10Ton 固定式焊接变位机
10Ton Fixed Welding Positioner (Perth, Australia)



15Ton 大型焊接变位机
15Ton Welding Positioner (Domestic)



30Ton 大型焊接变位机
30Ton Welding Positioner (Domestic)



5Ton 手动升降焊接变位机
5Ton Manual Elevating Welding Positioner (Montreal, Canada)



5Ton 手动升降焊接变位机装箱
Loading of 5Ton Manual Elevating Welding Positioner

焊接变位机 Welding Positioner



3Ton & 5Ton 3轴液压焊接变位机
3Ton & 5Ton 3Axis Hydraulic Welding Positioner (Dubai, UAE)



2Ton 特制液压升降焊接变位机
2Ton Customized Hydraulic Elevating Welding Positioner (Midland, TX)



3Ton 特制头尾式焊接变位机
3Ton Customized Head Tail Stock Welding Positioner (Singapore)



5Ton L型焊接变位机
5Ton L-type Welding Positioner (Belfast, UK)



2Ton 焊接回转台 (可定制速度)
2Ton Welding Turning Table (Batam, Indonesia)



WP & WPT 焊接卡盘
WP & WPT series Welding Chuck

焊接操作机 Welding Manipulator



概述:

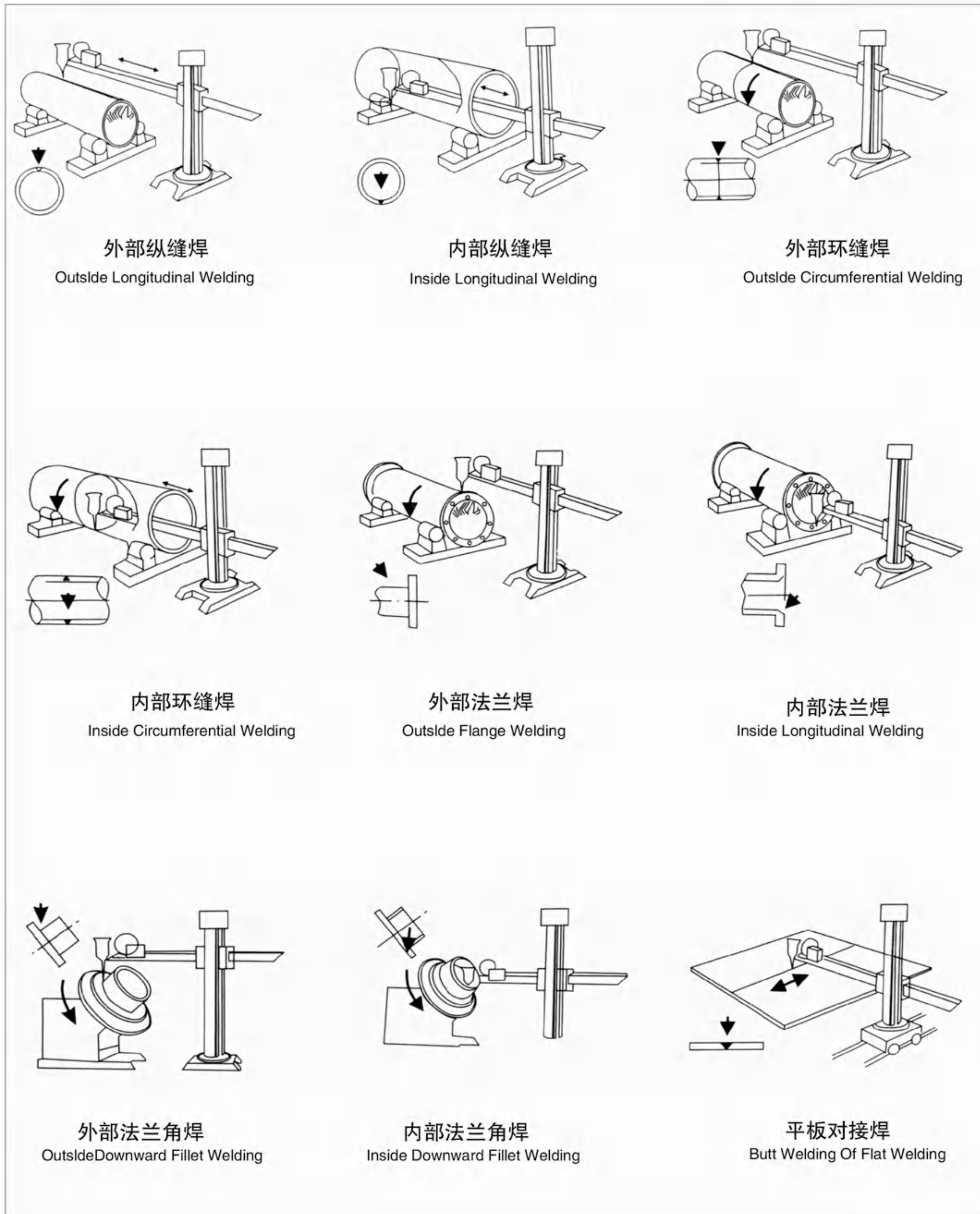
自动焊接中心有焊接操作机, 焊接滚轮架, 焊接变位机等三大系列品种选择组成, 并与直流自动埋弧焊机配套使用, 电器即可单独控制也可实行三位一体集中控制, 对容器或金属结构件实行自动焊接, 操作方便灵活, 性能可靠, 配套性强, 是保证焊接质量, 提高工效的理想焊接装备, 可成套购买, 也可单件选购, 并可按用户要求另行设计制造。

The welding center consists of the welding manipulator, auto-submerged arc welding machine(or CO2 shielded, TIG welding machines), the submerged arc welding machine, the cladding with strap, the turning rolls(or welding positioner). It can weld metal vessels, steel structure in all orientation by various welding methods. The center takes three functions in one to realize the manipulator, the turning roll and the positioner to be interlocked, and it is equipped with the welding tracking and monitoring system, arc oscillating unit, the control of arc length, the flux auto-feeding and recovering system.

技术参数:

型号 Model	横梁 Boom				前端负载 Max load at extremity Kg	回转方式 Rotation angle (±180°)	立柱 Column 设备总高 Total height (c)m	台车 Traveling cart			功率KW Power	包装 Package	
	升降行程 Vertical stroke (A)m	升降行程 Horizontal stroke (B)m	升降速度 Elevation speed m/min	升降速度 Traverse speed m/min				尺寸 (D) × (E) × Hm Dimensions	轨距 Rail c to c (F)mm	速度 Speed m/min		Dim.(B&C) L × W × H(m)	Gross weight (tons)
ZH1515	1.5	1.5	0.3	0.12~1.2	100	Man.	2.9	1.25 × 1.2 × 0.2	1052	Man. Or1.0	0.91	3.0 × 0.5 × 0.7	1.0
ZH2020	2.0	2.0	0.3		100		3.4	1.25 × 1.2 × 0.2	1052		0.91	3.2 × 0.6 × 0.7	1.5
ZH3030	3.0	3.0	1.0		200	手动或电动 Manual or motorized	5.5	2.4 × 1.9 × 0.4	1600	1.5/3	2.75	5.4 × 1.2 × 1.1	4.6
ZH3040	3.0	4.0	1.0		200		5.5	2.4 × 1.9 × 0.4	1600		2.75	6.0 × 1.2 × 1.1	5.1
ZH4040	4.0	4.0	1.0		200		6.5	2.4 × 1.9 × 0.4	1600		2.75	6.5 × 1.3 × 0.9	5.5
ZH4050	4.0	5.0	1.0		200		6.5	2.4 × 1.9 × 0.4	1600		2.75	7.0 × 1.3 × 0.9	6.0
ZH5050	5.0	5.0	0.9		300		7.8	2.6 × 2.1 × 0.5	1798		3.5	7.8 × 1.5 × 1.0	6.5
ZH5060	5.0	6.0	0.9		300		7.8	2.6 × 2.1 × 0.5	1798		3.5	8.3 × 1.5 × 1.0	7.0
ZH6060	6.0	6.0	0.9		300		9.7	2.6 × 2.1 × 0.5	1798		3.5	9.8 × 1.5 × 1.0	7.5
ZH7060	7.0	6.0	0.9		300		10.7	2.8 × 2.3 × 0.5	1998		4.25	10.8 × 1.5 × 1.0	8.5
ZH8060	8.0	6.0	0.9	300	11.7	2.8 × 2.3 × 0.5	1998	4.25	11.8 × 1.7 × 1.2	10.0			
ZH80100	8.0	10.0	0.9	300	11.7	3.2 × 2.4 × 0.5	2200	5.0	11.8 × 1.7 × 1.2	12.0			

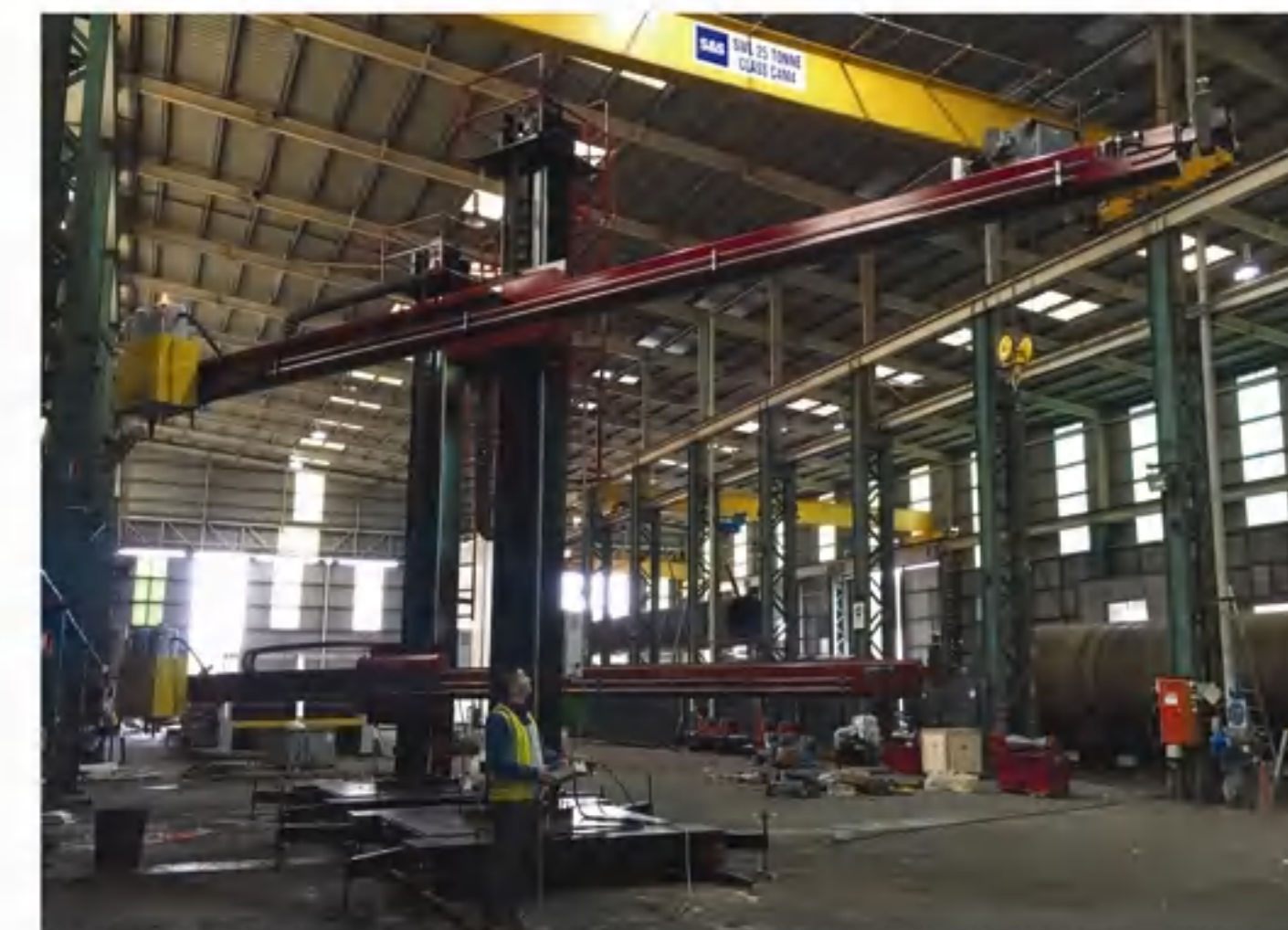
焊接中心示意图 Welding Center Demonstrate Scheme



土耳其安装调试5x10焊接操作机
Installation in Turkey for 5x10 Welding Manipulator



出口俄罗斯4x7焊接操作机
4x7 Welding manipulator (Cherbinsk, Russia)



澳大利亚安装调试5x9焊接操作机配林肯电焊机
Installation in Australia for 5x9 Welding Manipulator with Lincoln DC-1000 Welding Machine



小型操作机配变位机
1.5x1.5 Small Welding Manipulator with Welding Positioner (Toronto, Canada)



加拿大安装调试5x7焊接操作机配ESAB电焊机
Installation in Canada for 5x7 Welding Manipulator with ESAB LAF1001 Welding Machine



巴拿马安装调试4x4焊接操作机配林肯NA-5控制器
Installation in Panama for 4x4 Welding Manipulator with Lincoln NA-5 Controller

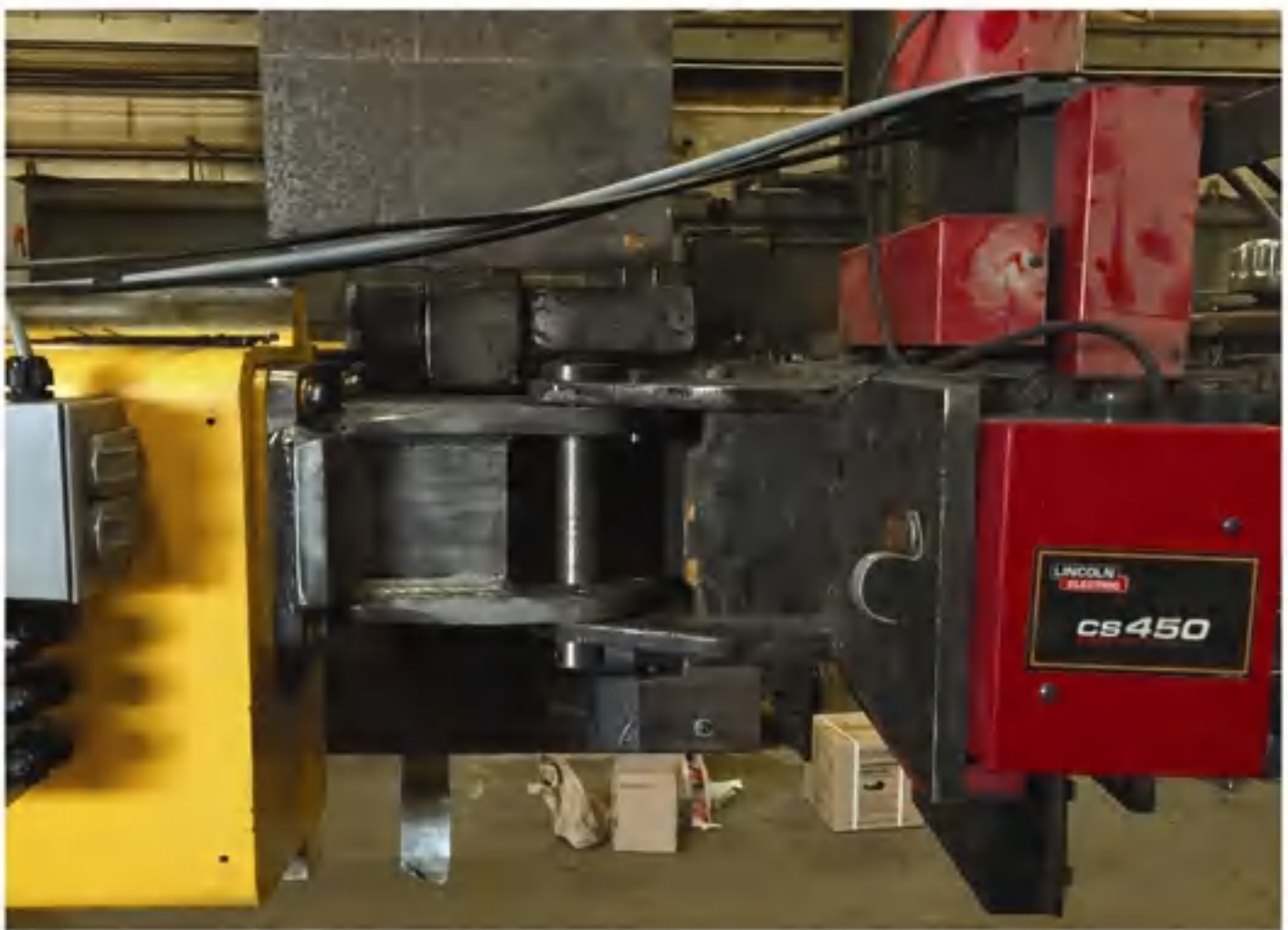
可选则的 Optional



林肯NA-5控制器配送丝机, 机头 (埋弧焊)
Lincoln NA-5 Controller with Wire Feeder & Welding Torch (SAW)



林肯84 送丝机配机头 (气保焊)
Lincoln 84 Wire Feeder & Welding Torch (MIG)



转角机构
Steering Mechanism



十字微调
Cross Slide



焊缝跟踪器
Seam Tracker



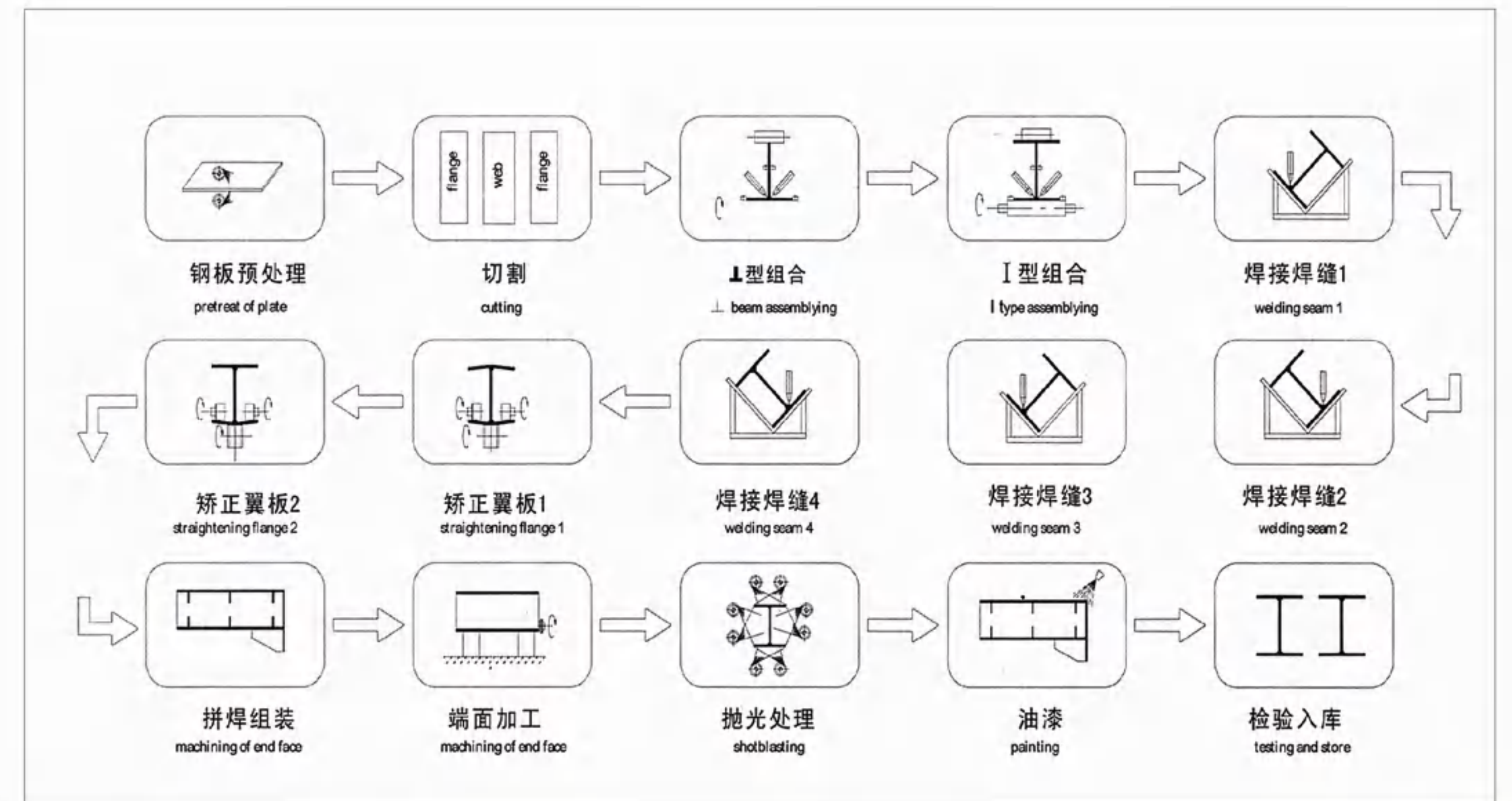
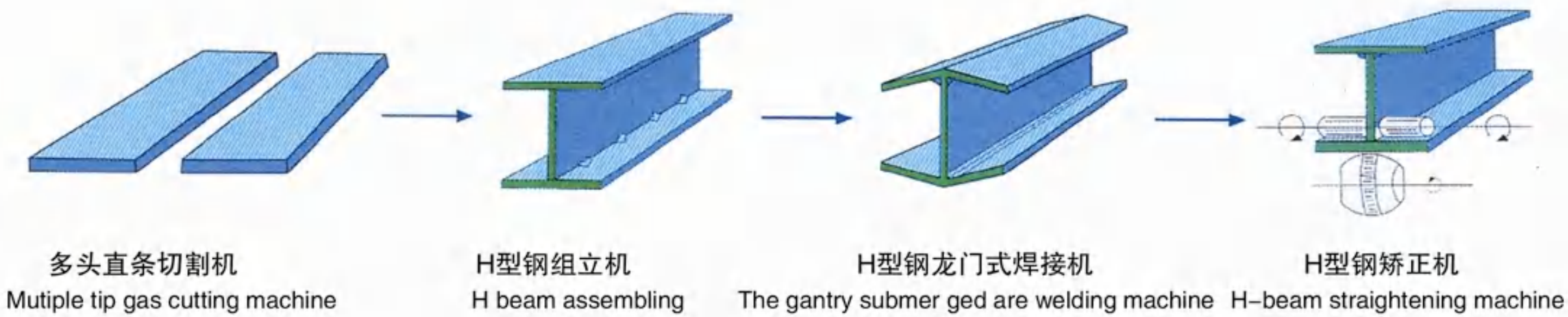
焊剂回收系统
Flux Recovery System

H型钢生产线 H-beam Production line

概述:

该生产线由数控切割机、H型钢自动组立机、H型钢龙门式自动焊接机或双悬臂自动焊接机、H型钢翼缘矫正机、H型钢抛丸机等主要设备组成。生产工艺上为单机独立操作, 工件转运靠起重机吊运, 整线比较灵活, 可在不同的工艺段添加设备, 以提高生产效率。

This production line consists of CNC cutting machine, H-beam automatic assembling machine, H-beam gantry automatic welding machine or double column-beam automatic welding machine, H-beam flange straightening machine, H-beam shot-blasting machine etc. The production craft work is operated by separate machine, and the work piece can be overturned and transported by crane. The whole production line with merits of agility and the production efficiency can be improved by adding equipment on different craft work.



数控火焰/等离子切割机 CNC Flame/Plasma Cutting Machine



概述:

数控火焰/等离子切割机(切割低碳钢、不锈钢、铝及铝合金、黄铜等板材),具有切割速度快、精度高、切割质量好、板材利用率高特点。本机的主体结构均整体去应力退火处理。应用德国精密减速机、高精度数字式伺服驱动系统、直线导轨等高品质功能部件、同时突出技术趋势,在同行业中性价比最高。

CNC Flame /plasma Cutting Machine (Cutting Mild Steel, stainless Steel, Aluminum And Aluminum Alloy, Brass Plate, etc) with The Cutting Speed, high Precision Cutting Quality, high Efficiency Version Chat Feature. the Main Structure Of This Machine Are As A whole To Stress Annealing Application Of The German Precision Gear, precision Digital Servo Drive System, Linear Guide High Quality Features, while Highlighting The Trends In Technology, the Highest Cost In The Industry.

技术参数:

轨距 (mm) Rail span(mm)	3000	4000	5000	6000	7000	8000
切割宽度Cutting width (mm)	2300	3200	4200	5200	6200	7100
驱动方式Drive way	单边驱动Single drive			双边驱动Double drive		
导轨长度Rail length	标准配置导轨长度15m, 可根据客户需要进行延长或缩短 Standard rail length is 15m, which can be extended or shortened on customer requirements.					
割炬数量Torch quantity	割炬数量Torch quantity 标准配置: 2组数控火焰切割炬, 9组直条割炬, 可根据用户需要进行增减 Standard configuration is 2 CNC torches and 9 strip torches, which can be altered on customer requirements.					
切割厚度Cutting thickness	火焰: 6-10mm, 可根据客户需要增加切割厚度, 最大350mm Flame: 6-10mm, which can be increased on customer requirements up to 350mm 等离子: 可根据用户需要进行推荐, 以供客户选择 Plasma: we recommend plasma power source model on customer requirement.					
空程速度Travel speed	Max: 12000mm/min					
切割速度Cutting speed	最大: 6000mm/min (根据切割材质而定) Max. 6000mm/min (Set upon cutting material)					
整机精度Precision	符合JB/T5102-1999要求 Conform to JB/5102-1999					
切割质量及尺寸偏差 Cutting quality and size warp	火焰: 符合JB/T10045.3-1999要求 Flame: Conform to JB/T10045.3-1999 等离子: 符合JB/T10045.4-1999要求 Plasma: Conform to JB/T10045.4-1999					

H型钢组立机 H-Beam Assembly Machine



概述:

H型钢组立机是本公司进行了广泛市场调查和了解用户的前提下开发而成的全自动H型钢组对设备。它有腹板、翼板、自动定位夹紧功能, 确保规定范围内, 不同宽窄板的自动定位、自动对中、自动点焊过程。自动点焊过程采用PLC可编程序控制实现自动控制, 比同类产品效率提高一倍以上。主机驱动采用进口交流变频器控制, 可靠稳定, 焊接设有跟踪导弧装置, 确保点焊质量。

H beam assembling machine is developed by our company in advance after extensive market research and efficient contact with the customers. It has automatic positioning of web plates and flange plates of different width within the scope specified and to automatically position the tack welding process. Automatic tack welding process is automatically controlled by PLC programmable control, more than double the efficiency of the similar products. The main frame is controlled by the imported AC inverter drive, being reliable and stable, with tracking guided arc welding equipment to ensure the quality of spot welding.

技术参数:

型号	Model	Z15	Z18	Z20
适用腹板高度	Applied web height	200-1500mm	200-1800mm	200-2000mm
适用腹板厚度	Applied web width	6-32mm	6-32mm	6-32mm
适用翼板宽度	Applied flange width	200-800mm	200-800mm	200-800mm
适用翼板厚度	Applied flange thickness	6-40mm	6-40mm	6-40mm
适用型钢长度	Applied beam length	4000-15000mm	4000-15000mm	4000-15000mm
组立速度	Assembly speed	0.5-6m/min	0.5-6m/min	0.5-6m/min
输入辊道	Input conveyor	2600mmx3	2600mmx3	2600mmx3
输出辊道	Output conveyor	2600mmx3	2600mmx3	2600mmx3
整机功率	Total power	11.7Kw	11.7Kw	11.7Kw

H型钢龙门焊 H-beam Gantry Welding Machine



概述:

H型钢龙门焊机专为H型钢焊接而设计。它实现了焊接控制和小车控制的结合,可以轻松操作。它使用ULS电机驱动器来驱动门户。由交流电转换器驱动;稳定的速度,数字显示的线性速度,可靠性好,没有三轴机械导向ar导向机构;folating typ tracing,确保焊枪准确定位在焊缝处。埋弧焊的电源线可以在门架上移动,以尽可能缩短控制电缆和焊接电缆的长度,加快响应速度,降低压力,稳定焊接电流。

H-beam steel gantry welding machine is specially designed for the welding of H beam. It realized the combination of welding control and trolley control and can be operated easily. It use ULS motor drive for the drive of portal. Driven by alternating current converter; stable speed, digital display of the linearity speed, good reliability, there is no threeaxle mechsncal tracting ar guiding ar guiding mechanism; folating typ tracing to guarantee that the welding torch targeting at the welding seam accurately. The power line for the submerged arc welding can move on the portal frame to shorten the length of the control cable and the welding cable as far as possible to quicken the response, reduce the pressure and stabilize the welding current.

技术参数

Height of the Wing Board	翼板的高度	200-800mm
Thickness of Wing Board	翼板厚度	6-40mm
Height of the Former	腹板的高度	200-1500mm
Thickness of the Former	腹板的厚度	6-32mm
Length of the Usable Work Piece	可用工件的长度	4000-15000mm
Welding Speed	焊接速度	240-1000mm/min
Speed of Back Stepke	后退速度	3000mm/min
To-and-fro Stoke of the Welding Amn	焊接臂的往复行程	800mm
Welding Position	焊接位置	fillet welding in the flat position
Size of the Usable Welding Wire	可用焊丝的尺寸	3.2-5mm
Driver	驱动	bilateral

H型钢液压矫正机 H-beam Straightening Machine



概述:

H型钢法兰矫正机是专门为钢法兰校正而设计的,主机采用22kw电动机和销齿轮减速机驱动,高效高速。所有校正辊均采用优质合金钢制成。此外,该机器经过先进的热处理,以防止爆裂,所有部件都加强,以稳定校正,实现长使用寿命。

H-beam steel flange straightening machine is specially designed for the correction of the steel flange, The main machine usea the 22kw electric motor and pin gear reductor drive characterized by high efficient and high speed. All the correcting rollers are made of high-quality alloy steel. Besides, the machine is put under advanced hot treatment to prevent crackles, All the parts are reinforced to stabilize the correction and realize the long service life.

型号	Descriptions	HYJ-600	HYJ-800	YTJ-60B	YTJ-80B
翼缘宽度	width of flange	150-600	200-800	180-800	600-1000
翼缘厚度	thickness of flange	≤20mm	≤40mm	≤60mm	≤80mm
腹板最小高度	min height of web	160mm	350mm	350mm	500mm
材质	material	Q235A	Q235A	Q345A	Q235Mn
矫正速度	straightening velocity	5.7m/min	18m/min	6.37m/min	6m/min
电机功率	motor power	9kw	24.2kw	37kw	44kw
设备外行尺寸 (mm)	nominal dimension	3355 × 890 × 1573	3500 × 1500 × 1700	3120 × 4100 × 2100	3120 × 4100 × 2100
设备质量	weight	7000kg	9000kg	25000kg	28000kg

H型钢拼焊矫一体机 H-beam Assembling,Welding and Straightening Machine (3 in 1)



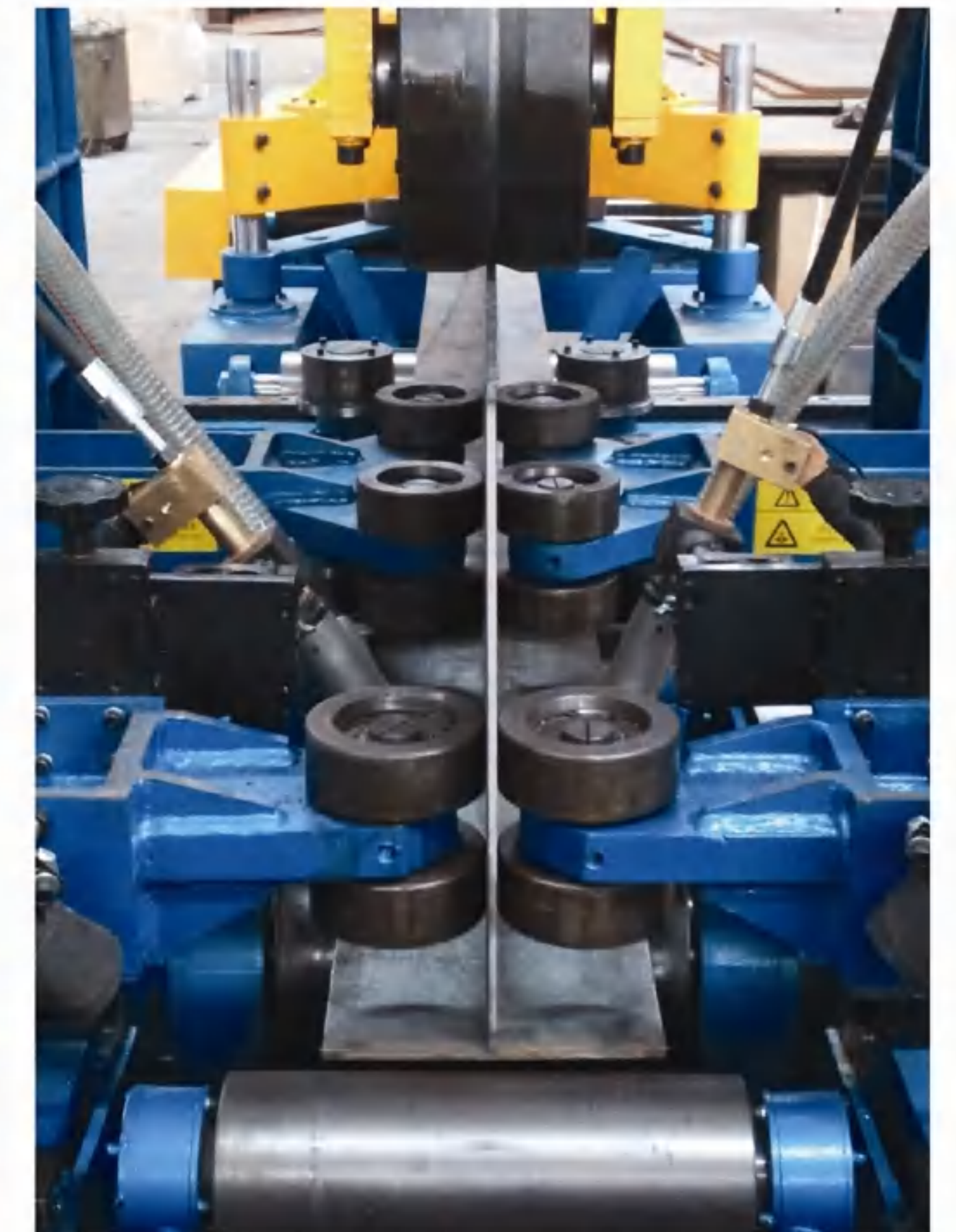
概述:

H型钢制造机是一种先进高效的H型钢制造设备,具有精确装配,CO₂或SAW焊接,矫直等功能。它体积小,单位面积产量高,是制造轻型H型钢的理想设备。该设备不仅可以制造H型钢,还可以制造T型钢;不仅有对称法兰梁,还有不对称法兰。

H-beam fabrication machine is a kind of advanced and high efficient equipment for making H-beam, integrating the function of accurate assembly, CO₂ or SAW welding, and straightening. It is compact in size and high in output per unit area, which is ideal equipment for making light-duty H-beam. The equipment can not only manufacturing H-beam, but also T-beam; Not only beam of symmetric flange, but also asymmetric flange.

技术参数

Model	PHJ15	PHJ18	PHJ20
Web 腹板 height 高度	200~1500mm	200~1800mm	200~2000mm
Web 腹板 width 宽度		5~20mm	
Flange 翼板 width 宽度		160~800mm	
Flange 翼板 thickness 厚度		6~25mm	
Workpiece 工件 length 长度		3000~15000mm	
Welch 焊接 speed 速度		200~1200mm/min (变频调速)	
Size 尺寸 L×W×H	28m×4m×4.6m	28m×4m×4.9m	28m×4m×5.1m



数控相贯线切割机 CNC Intersection Cutting Machine



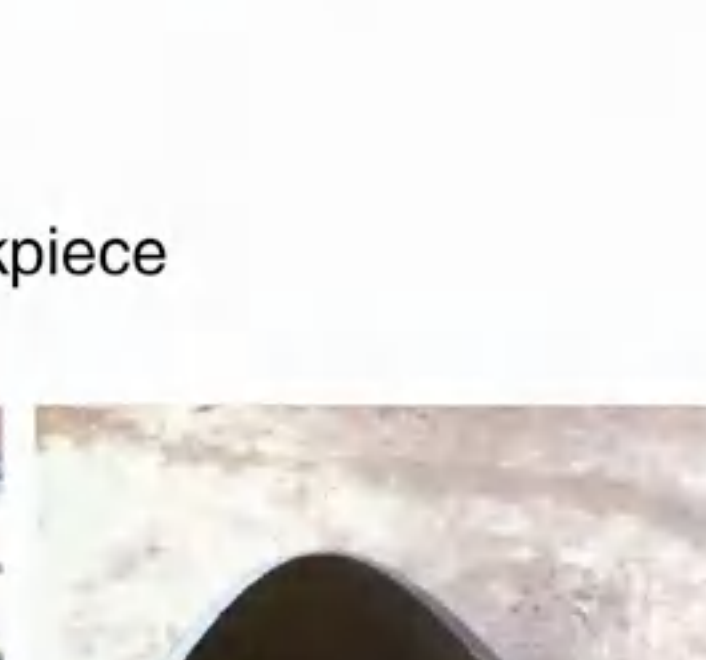
概述:

数控相贯线切割机是管子主管与支管相交孔自动切割的专用设备,按驱动轴联动的数量可以分为两轴切割机、三轴单坡口切割机以及四轴、五轴全坡口切割机等多种产品结构类型,按切割方式又可以分为火焰与等离子两种。系统采用全自动编程及工艺引导,操作方便快捷、简单易懂。可根据用户的需求选择类型,也可为用户设计制造各种特制数控相贯线切割机。

CNC intersection cutting machine is a special machine which can cut the saddle hole formed from main pipe and branches pipe according to driven spindle its including two axis cutting,three axis single groove cutting etc we can provide with it in the forms of flame,plasma cutting,the operation system is all automatic programming and technological procedures,operation convenient,under standability,we can customize various different specific ations according to customer s need.

技术参数:

切割方式 Model	火焰 Flame	等离子 Plasma
切割管子直径 pipe diameter	φ 50-600mm	
切割管子壁厚 pipe thickness	5-50mm	2-20mm
切割管子长度 pipe length	6000-12000mm	
控制轴数 control axis	两轴 三轴 四轴 五轴	



实例示范
Beveling Workpiece